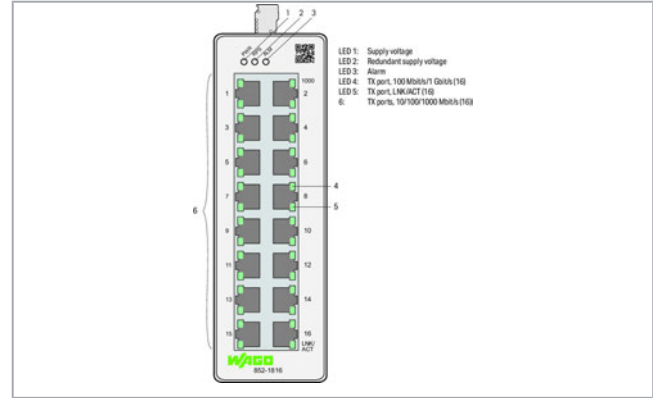
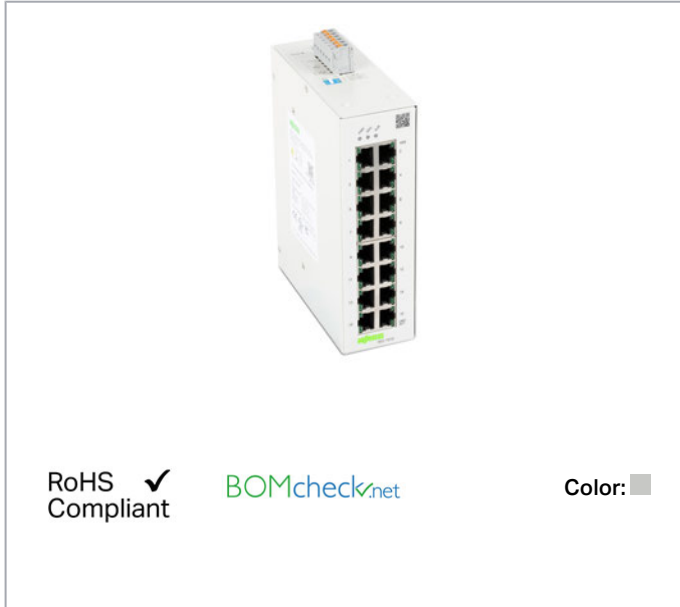


Data sheet | Item number: 852-1816 **NEW**
 Lean Managed Switch; 16 Ports 1000Base-T; light gray



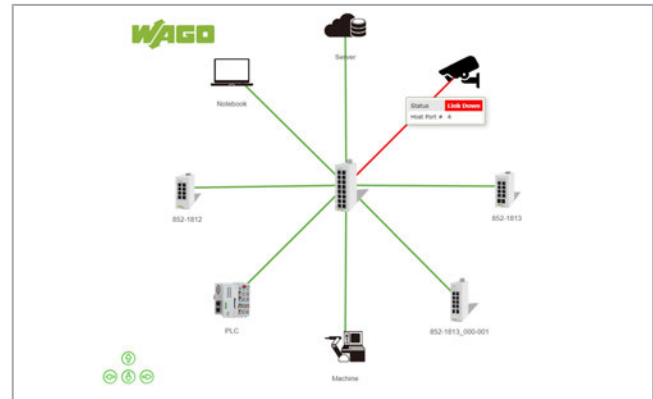
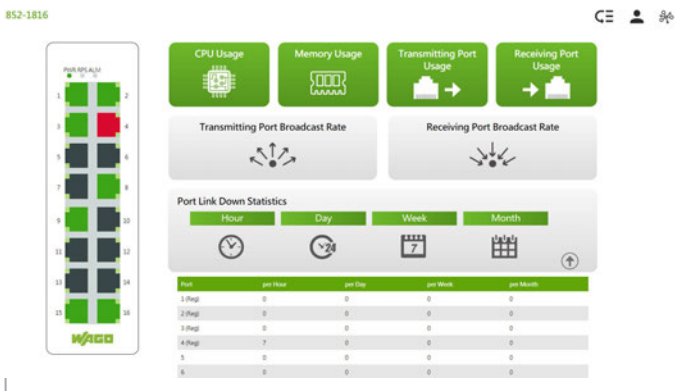
www.wago.com/852-1816



RoHS Compliant ✓

BOMcheck.net

Color: ■



Item description

The 852-1816 is configurable industrial ETHERNET switch equipped with sixteen 10/100/1000BASE-T ports. Enclosed in a rugged housing, this switch offers both a redundant power supply and relay-based function monitoring. This device also streamlines network management: Commissioning and diagnostics are intuitive and can be performed without extensive IT knowledge. The topology map clearly displays the switch and connected devices. Key diagnostic information is displayed on the diagnostics dashboard. The following functions increase the robustness, availability and security of the network.

Security:

Network segmentation per IEEE802.1Q (max. 5 VLANs), authentication of network devices per IEEE802.1X, firewall functions using the access-control list (max. 32 entries)/service control, port security

Subject to changes. Please also observe the further product documentation!

**Availability:**

Rapid Spanning Tree Protocol (RSTP) for meshed and ring networks, ETHERNET Ring Protection Switching (ERPS) for up to two rings per switch, loop detection and storm control on each port

Configuration/Diagnostics/Maintenance:

Port mirroring, Modbus® registers, SNMP v3, SNMP trap events, alarm threshold, port statistics, backup and restore, system log, syslog server, command line interface with SSH/Telnet, topology map and dashboard

Data**Technical Data**

Switching mode	Store-and-forward; non-blocking
Number of 1000Base-T ports	16
Communication standards	IEEE 802.3 10BASE-T IEEE 802.3u 100BASE-TX/FX IEEE 802.3ab 1000BASE-T IEEE 802.3x Flow Control IEEE 802.1d Spanning Tree Protocol (STP) IEEE 802.1w Rapid Spanning Tree Protocol (RSTP) IEEE 802.1Q VLAN Tagging IEEE 802.1p Prioritization IEEE 802.1x Port Authentication IEEE 802.1ab Link Layer Discovery Protocol (LLDP) IEEE 802.3az Energy Efficient Ethernet ITU-T G8032v1/v2 Ethernet Ring Protection Switching (ERPS)
Redundancy function	Redundant DC power supply; STP; RSTP; ERPSv1/v2 (max. 2 rings per switch, max. 16 switches per ring, switching time < 800 ms)
Configuration options	DIP switch for signal contact Web-Based Management Command Line Interface SNMPv1/v2c/v3
Diagnostics	Signal contact; Modbus TCP; port status; port statistics; port load; traffic monitor; syslog; SNMP traps; loop detection; diagnostics dashboard; topology map
MAC table (size)	8000 addresses
Jumbo frame size	10000 Byte
Supply voltage	DC 12 60 V
Power consumption (max.)	12 W
ESD (contact/air discharge)	8 KV / 15 KV
Baud rate	Copper cable: 10/1000 Mbit/s
VLAN	Port-based and tag-based (max. 5 VLANs)

Connection data

Connection technology: communication/fieldbus Copper cable: 16 x RJ-45

Subject to changes. Please also observe the further product documentation!

Physical data

Width	50 mm / 1.969 inch
Height	160 mm / 6.299 inch
Depth from upper edge of DIN-rail	120 mm / 4.724 inch

Mechanical data

Weight	840 g
Color	light gray
Conformity marking	CE

Environmental Requirements


Surrounding air temperature (operation)	-40 60 °C
Surrounding air temperature (storage)	-40 85 °C
Protection type	IP30
Relative humidity (without condensation)	95 %
Mounting type	DIN-35 rail
Vibration resistance	per IEC 60068-2-6
Shock resistance	per IEC 60068-2-27
EMC immunity to interference	per EN 61000-6-2
EMC emission of interference	per EN 61000-6-4

Commercial data

Packaging type	BOX
Country of origin	TW
GTIN	4055144019377
Customs tariff number	85176200000

Approvals / Certificates

UL-Approvals

Logo	Approval	Additional Approval Text	Certificate name
	UL Underwriters Laboratories Inc. (ORDINARY LOCATIONS)	UL 61010-2-201	E175199

Subject to changes. Please also observe the further product documentation!



Downloads

Documentation

Manual

Lean Managed Switch 16 Ports 1000BASE-T	V 1.0.0 Sep 23, 2020	pdf 8.2 MB	Download
--	-------------------------	---------------	--------------------------

Installation Notes

Subject to changes. Please also observe the further product documentation!
